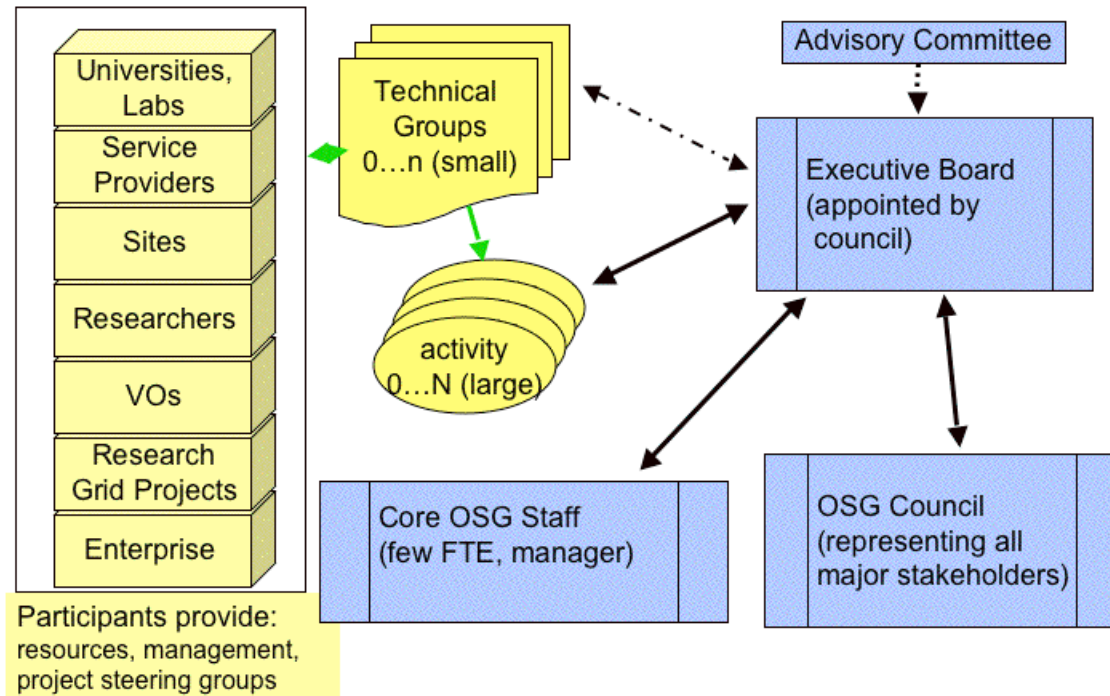


## **Organizational Structure of the Open Science Grid Consortium:**

The governing bodies of the OSG Consortium are the OSG council and the OSG executive board. The organizational structure is depicted in Figure 1.



**Figure 1.**

Users of and providers to the OSG are not required to be affiliated with OSG member organizations.

### **Membership of the OSG Council:**

The OSG council represents the organizations that comprise the OSG Consortium. The initial OSG council is composed of one representative of each of the organizations listed in Appendix 1.

New organizations may apply for membership in the OSG council if supported by at least one existing member organization in the OSG council. The proposal is then sent to the OSG Executive Board. It is the responsibility of the Executive Board to bring the

proposal to a vote in the council when appropriate. The OSG council formally votes on the acceptance of new member organizations to the Council.

### **Membership in the OSG executive board:**

Members of the OSG executive board are appointed by the OSG council. An interim executive board is comprised of the people listed in Appendix 2.

The executive board speaks for the OSG consortium.

### **Establishment of bylaws:**

The bylaws and charter are accepted by vote of the OSG council. The initial bylaws and charter were accepted by consensus.

### **Amendment of bylaws or charter:**

- (1) An amendment to the bylaws or charter can be proposed by any member of the Executive board.
- (2) A proposed amendment is then accepted by a vote of the OSG council.

### **Documents:**

- (1) OSG Charter
- (2) Governance Procedures.
- (3) Acceptable Use Policy (AUP) for users and providers.
- (4) OSG core infrastructure.
- (5) Operational procedures, including incidence response.
- (6) The OSG market place.

## **Appendix 1: Open Science Grid Consortium Council**

This lists those organizations that have representatives on the Open Science Grid Consortium Council at its inception. The list is based on those organizations that are the major stakeholders and contributors.

### Facilities:

Argonne National Laboratory,  
Brookhaven National Laboratory,  
Center for Computational Research, SUNY-Buffalo,  
Fermi National Laboratory,  
Thomas Jefferson National Facility,  
Lawrence Berkeley National Laboratory,  
Stanford Linear Accelerator Center

### Application Communities:

US Atlas, BaBar, BTeV, CDF, US CMS, D0, GRASE, LIGO, SDSS, STAR

### Technology Providers:

US Atlas s&c, US CMS s&c, Condor, Globus, PPDG-Common, SRM, VDT

### Contributing Computing Projects:

Grifphyn, iVDGL, PPDG

### Ex-officio:

OSG executive board members

### Liaisons (non-voting):

LCG, EGEE, TeraGrid

## **Appendix 2: Open Science Grid Executive Board**

This lists those people that are on the Open Science Grid Executive Board at its inception.

Lothar Bauerdick  
Ian Foster  
Rob Gardner  
Howard Gordon  
Mark Green  
Albert Lazzarini  
Miron Livny  
Richard Mount  
Harvey Newman  
Ruth Pordes  
Jim Shank  
Frank Würthwein (chair)